

UKPA Masyu Contest

Friday 14 May – Monday 17 May 2021

Duration: 90 minutes

INSTRUCTION BOOKLET

This contest contains 15 puzzles – a few standard Masyu puzzles and a number of variants.

The points distribution for the contest is as follows.

Puzzle	Type	Grid Size	Points
1	Standard	8 × 8	10
2	Standard	8 × 8	10
3	Standard	10 × 10	20
4	Standard	10 × 10	15
5	Standard	15 × 20	75
6	Alternating	8 × 8	15
7	Alternating	10 × 10	25
8	Deformable	8 × 8	35
9	Deformable	10 × 10	40
10	Unequal Length	8 × 8	25
11	Unequal Length	10 × 10	75
12	No Touch	8 × 8	15
13	No Touch	10 × 10	65
14	Two Loops	8 × 8	15
15	Two Loops	10 × 10	60
Total			500

All the puzzles have been set by David McNeill and tested by Adam Bissett.

Participant Details

To participate, you will need to register online with the UK Puzzle Association at <http://forum.ukpuzzles.org/ucp.php?mode=register> . Any questions related to the instructions should be raised in the discussion thread at <http://forum.ukpuzzles.org/viewtopic.php?f=5&t=2480> . The contest is designed to be printed out and solved on paper. The competition booklet will consist of 8 pages with two puzzles on most pages.

Shortly before the contest starts, the password protected pdf file will be made available at <https://ukpuzzles.org/contests.php?contestid=62> . It is recommended that you download this file before retrieving the password. The contest will start at 09:00 BST on Friday 14 May 2021, when the password will be made available. Upon retrieving the password, you will have 90 minutes to solve the puzzles and submit your answers via the entry page at <https://ukpuzzles.org/answers.php?contestid=62> . The contest will end at 23:00 BST on Monday 17 May 2021, so it is highly recommended that you retrieve the password and start solving before 21:30 BST on Monday 17 May 2021.

For answer submission, you will need to enter loop information for certain rows in each puzzle. These rows will be labelled A and B for the 8×8 puzzles, A - C for the 10×10 puzzles and A - E for the 15×20 puzzle. For each labelled row, the lengths of the loop segments within the row (read from left to right) should be entered as a single string. Strings for different rows should be separated by a comma without a space. Caution: Please note that a loop segment which visits N consecutive cells is only of length N-1. The answer key format is illustrated in the examples in this booklet.

Rules and Examples

General

Draw a loop in the grid which travels orthogonally between the centres of cells. The loop must visit all cells marked with a circle. The loop must turn in each cell containing a black circle and continue straight in both of the adjacent cells. The loop must go straight through each cell containing a white circle and turn in at least one of the adjacent cells.

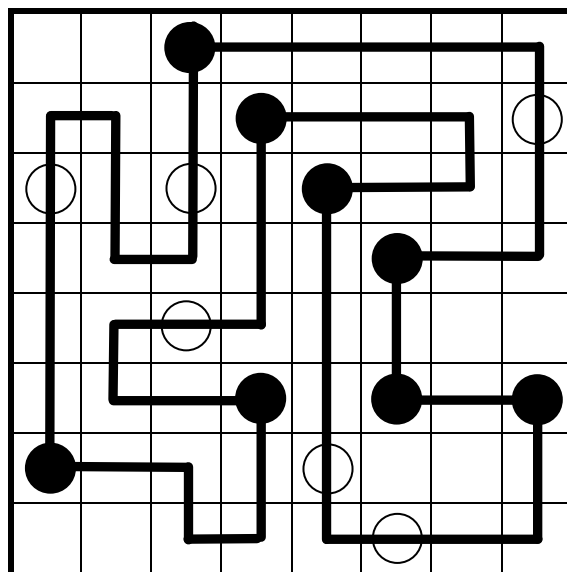
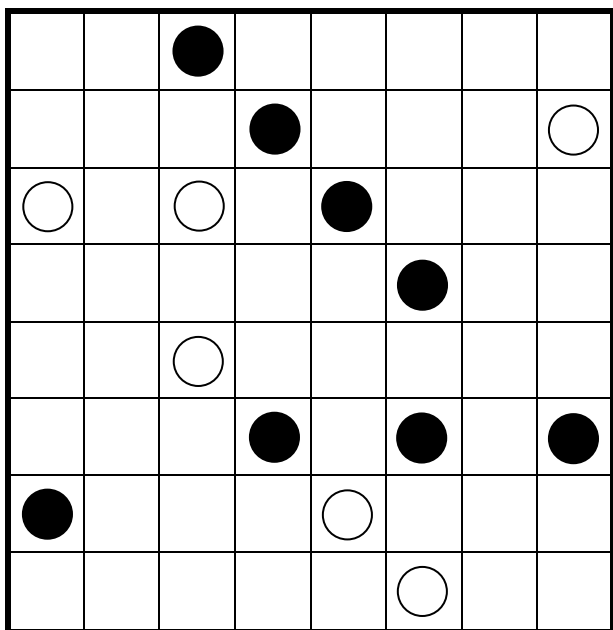
Examples

The examples are presented two per page, as will also be the case with most of the competition puzzles. All examples are presented using 8×8 grids, although the corresponding competition puzzles can vary in size as detailed in the points distribution table above.

Answer keys for rows 2 & 7 of each example are given in this booklet. In the contest, the rows forming the answer key will be labelled with letters and will vary from puzzle to puzzle.

Puzzles 1 - 5: Standard

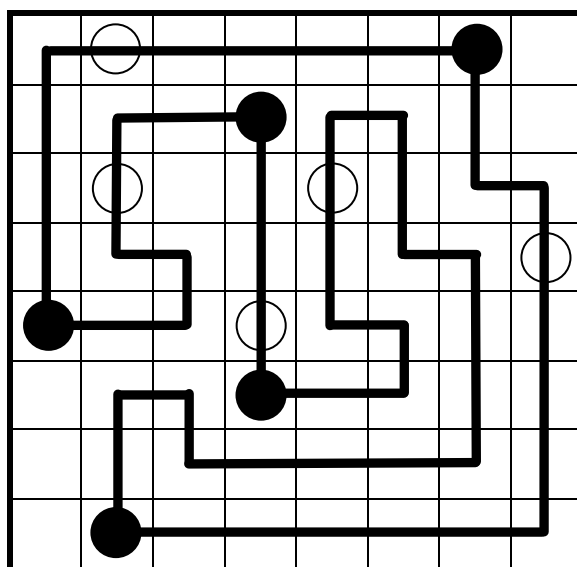
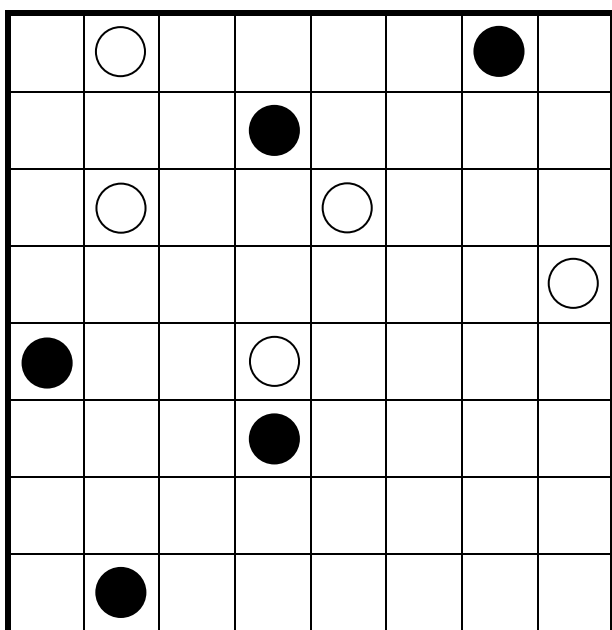
Draw a loop in the grid which travels orthogonally between the centres of cells. The loop must visit all cells marked with a circle. The loop must turn in each cell containing a black circle and continue straight in both of the adjacent cells. The loop must go straight through each cell containing a white circle and turn in at least one of the adjacent cells.



Answer key (rows 2 & 7): 13,2

Puzzles 6 & 7: Alternating

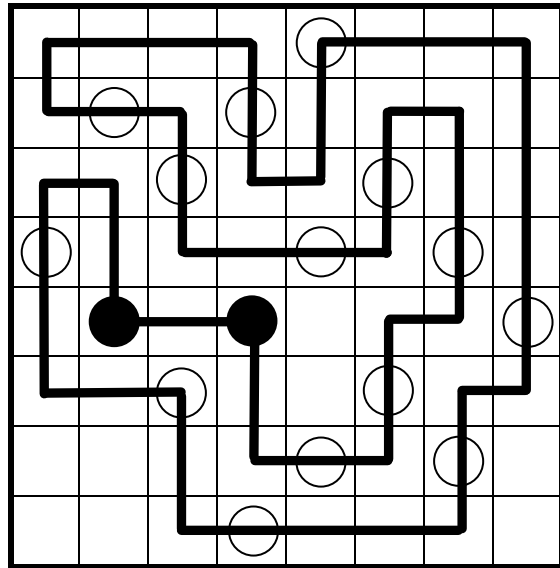
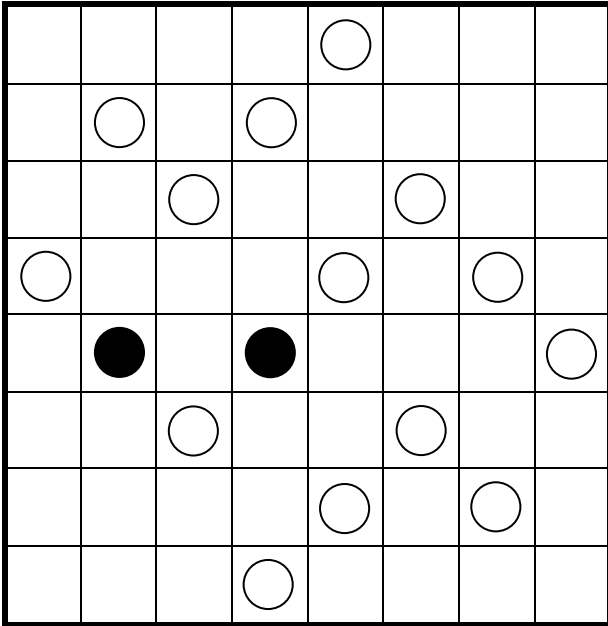
Standard Masyu rules apply. In addition, black and white circles must alternate along the loop.



Answer key (rows 2 & 7): 21,4

Puzzles 8 & 9: Deformable

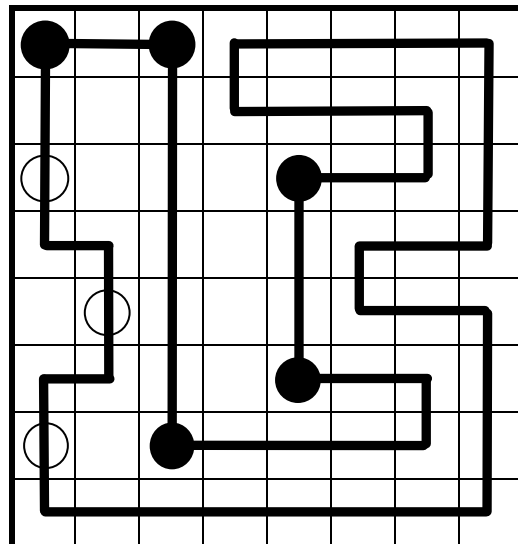
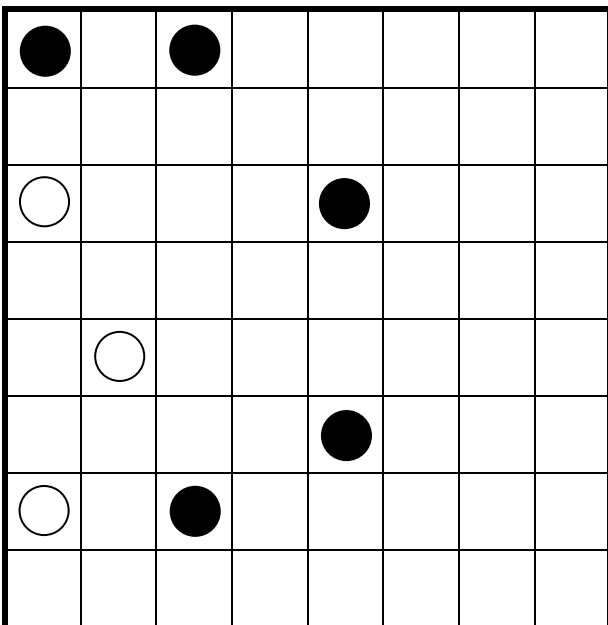
Standard Masyu rules apply. However, given white circles could be black circles in disguise.



Answer key (rows 2 & 7): 2,1

Puzzles 10 & 11: Unequal Length

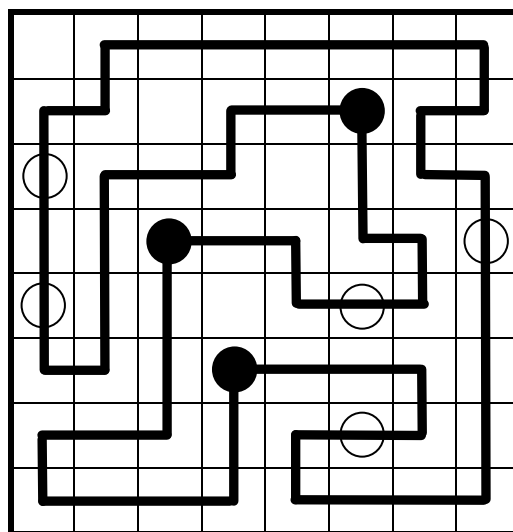
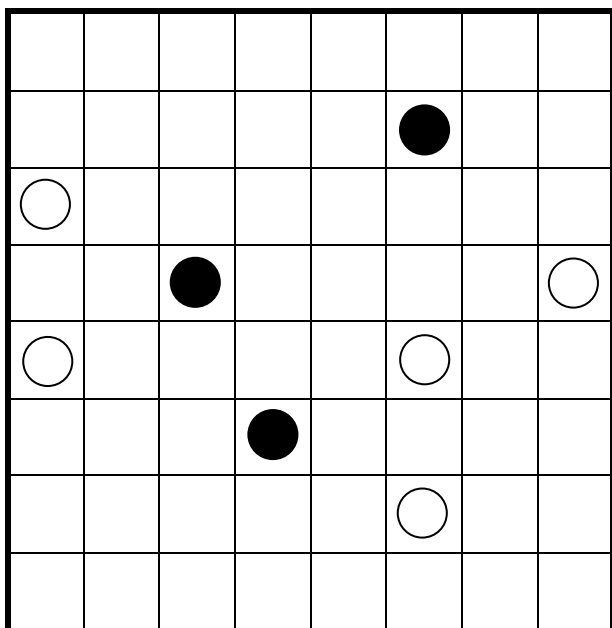
Standard Masyu rules apply. In addition, consecutive loop segments cannot have the same length.



Answer key (rows 2 & 7): 3,4

Puzzles 12 & 13: No Touch

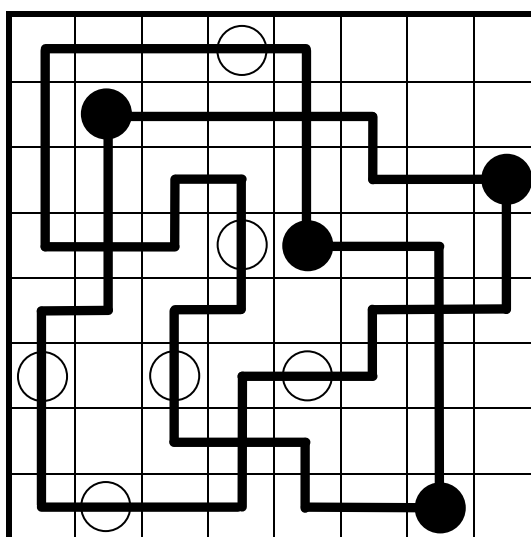
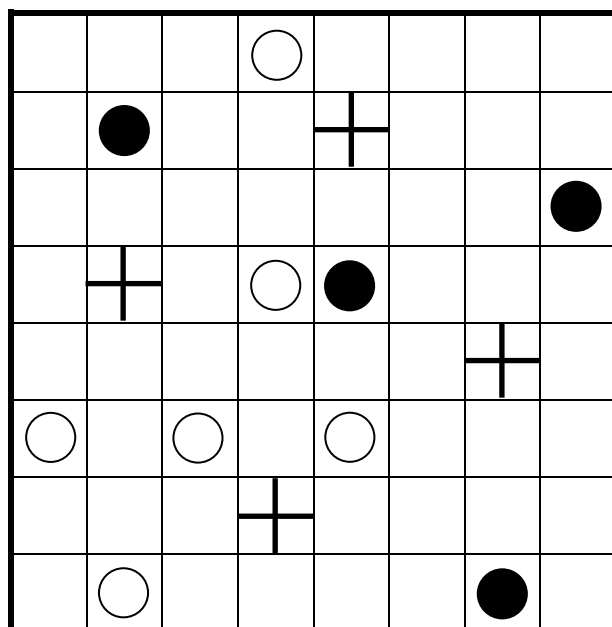
Standard Masyu rules apply. In addition, cells not visited by the loop cannot be orthogonally adjacent.



Answer key (rows 2 & 7): 121,22

Puzzles 14 & 15: Two Loops

Standard Masyu rules apply. However, there are exactly 2 loops to be found. All cells in which the 2 loops cross each other are marked by a cross. Loops do not share any other cell and neither loop crosses itself.



Answer key (rows 2 & 7): 4,2